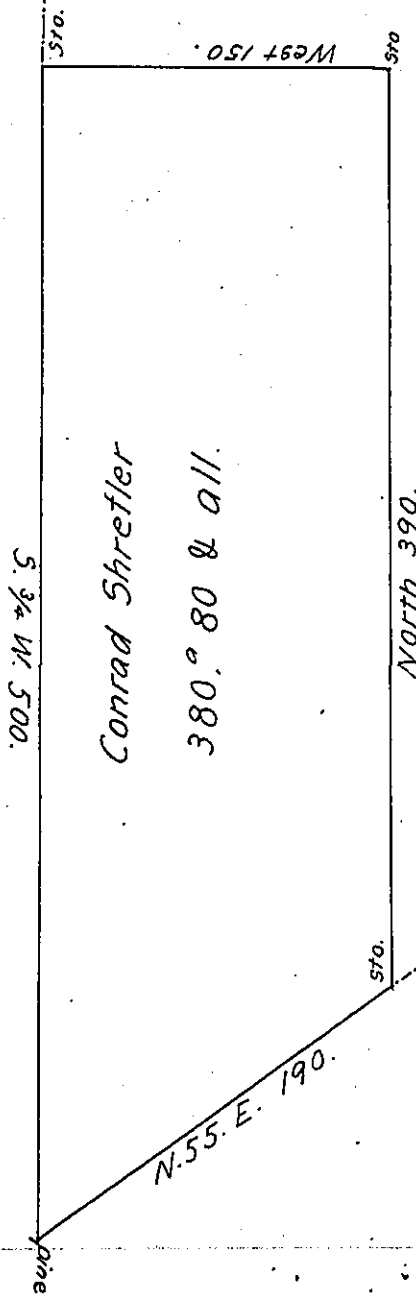


89 10

Solomon Jno Shoffstall

V
A
C
A
N
T



0-29-117

811-29-118

Surveyed May 19. 1829 for Conrad Shrefler pursuant to his
 warrant dated May 8. 1829. Situate in Rush township Dauphin County
 Containing Three hundred eighty acres eighty perches and allowance
 of Six per Cent.

John Davies D.S.

To Gabriel Hiester Esqr.
 Surveyor Genl.

IN TESTIMONY that the above is a copy of the original remaining on file in
 the Department of Internal Affairs of Pennsylvania, made
 conformably to an Act of Assembly approved the 16th day of
 February, 1833, I have hereunto set my Hand and caused
 the Seal of said Department to be affixed at Harrisburg,
 this Seventeenth day of December 1906.

Isaac R. Brown
 Secretary of Internal Affairs.